

Wahkiakum SCHOOL DISTRICT

CATHLAMET, WASHINGTON

Full-Time Superintendent

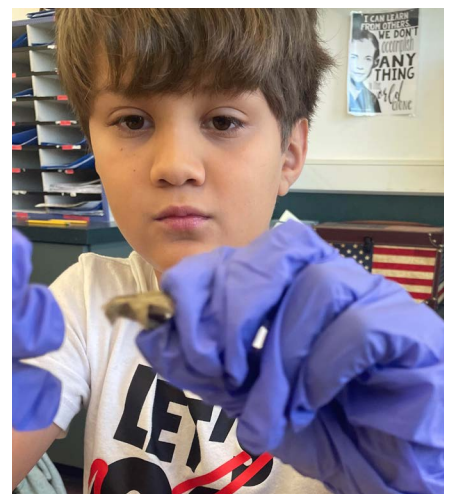
THE WAHKIAKUM SCHOOL DISTRICT SEEKS a full-time Superintendent dedicated to the education and development of all students. The Superintendent will be a leader with a successful history of supporting student achievement, establishing team building and professional networks for staff, engaging the community, and promoting a positive safe school environment.

THE SUCCESSFUL CANDIDATE WILL BE SOMEONE WHO:

- ☆ Is honest, ethical, and a transparent leader with a long-term vision for the district.
 - ☆ Can demonstrate a strong background in finance and business, with a focus on fiscal accountability and fiscal responsibility.
 - ☆ Has demonstrated experience managing multiple varied and/or diverse projects simultaneously.
 - ☆ Understands K-12 Capital Facilities and is willing to be a hands-on facility advocate.
 - ☆ Is a strong communicator with experience building and supporting learning communities. Supports a dynamic educational experience.
 - ☆ Demonstrates knowledge of Washington school law, academic standards, professional development and evaluation systems.
 - ☆ Actively participates in school and community events. Builds strong parent and community support. Residency in the district is preferred.
 - ☆ Ensures that the district complies with all state and federal mandates, laws, policies and regulations.
- ☞ Preferred candidates will have at least a combined three years of experience in K-12 district level administrative roles. Additionally, preferred candidates will hold, or are eligible to hold, a Washington State Superintendent Certificate.
 - ☞ The Superintendent will work 260 days per year which will include holidays, vacation days, and sick leave.
 - ☞ Wahkiakum School District offers a competitive compensation package including excellent benefits and membership in the Washington State Retirement System.

OUR MISSION

We strive to provide a quality education that empowers and inspires all students to be productive, confident, contributing and respectful citizens.



OUR DISTRICT AND COMMUNITY



APPLICATION PROCESS

The Wahkiakum Board of Directors has retained Educational Service District 112 to assist in the superintendent search process. For more information and an application please visit the ESD 112 website at <https://www.esd112.org/takeroot/>

COMPLETED APPLICATION WILL INCLUDE:

1. Letter of interest
2. Completed Wahkiakum School District superintendent application form (online)
3. Resume
4. Names and contact information of three professional references
5. Unofficial transcripts or placement files
6. A statement addressing experience/ skills in educational leadership, student behavior management, communication, fiscal and organizational management, board relations, planning/vision, personnel administration and community involvement.

APPLY ONLINE:

<https://www.esd112.org/takeroot/>

Questions and inquiries may be addressed to:

Patti Phillips, Wahkiakum SD
360-795-3271
pphillips@wahksd.k12.wa.us

Applications received by May 17, 2024 will receive first consideration, however the Board of Directors reserves the right to review any candidate until a superintendent is selected.

Wahkiakum School District No. 200 complies with all federal and state rules and regulations and does not discriminate based on sex, race, creed, religion, color, age, national origin, sexual orientation including gender expression or identity, marital status, veteran or military status, disability, or the use of a trained dog guide or service animal in any programs or activities, and provides equal access to the Boy Scouts and other designated youth groups.

Cathlamet (Kath-LAM-et), the County Seat of Wahkiakum County, is the second oldest town in Washington, was visited by Lewis and Clark on the "Voyage of Discovery" in 1805. Cathlamet is the home of the Wahkiakum School District, with students living in Cathlamet, Skamokawa, on Puget Island and "up the valleys." Our community is a multi-generational group dating back to the 1850's, crosscut with families who have more recently discovered the wonders of our corner of the world. Our community is known for clean air, clear water, abundant wildlife and healthy living, in a county without a single traffic light. The traditional industries of the area include fishing, farming and forestry which have preserved the rural beauty and a slower pace of life where people still stop on the street to genuinely ask how you are.

Cathlamet is perched on a rugged shoreline of the Columbia River in Wahkiakum County. When Lewis and Clark passed through the area in November 1805 the area was inhabited by the Wahkiakum People and spoke the Chinook language. As fur traders followed "The Voyage of discovery", they brought trade as well as disease into the villages of the Wahkiakum, which decimated much of the tribe by the late 1830's. James Birnie, a retired Hudson Bay Company employee, and his wife, Charlotte, brought their ten children to the village of Cathlamet in 1846, establishing a trading post which soon became a thriving business trading furs, fish and other foods. Charlotte Birnie, of Kootenai and French Canadian heritage contributed to good relations with the 300-400 local Wahkiakum who remained in the area, playing a critical role in commerce and community relations. Rose Birnie, sister of James, arrived in Cathlamet in 1850 to teach her brother's now twelve

children and became Wahkiakum County's first schoolteacher. She later married a former Hudson's Bay clerk, George Roberts. Their home, built in 1857, is now known as the Julia Butler Hansen Heritage Center and is the oldest home in the community.

Without question, Wahkiakum School District is the epicenter of our community. Citizens not only look for us to provide an education for their children, but also to provide a community center for sports, clubs, and student-community interactions. Our district currently has 410 K-12 students. We pride ourselves in knowing every student well, and take pride in growing programs that provide opportunities often found only in larger districts. We can boast 60,000 square feet of school gardens, just under a hundred acres of forest directly accessible to our students on our campus, a robust culture of clubs including our Robotics Club that recently took the honor of placing first in the International SeaPearch underwater Robotics Competition. We provide financial literacy across all grade bands and our high school offers Advance Placement and College in the High School courses. We have implemented time vertical integration ensuring our K-8 students are well prepared for high school. We also have a broad reaching exploratory CTE program that opens doors in Ag Science, Welding, and hands-on Natural Resource Management in our school-owned Farm Forest.

Our district partners include Wahkiakum Health and Human Services, Marine Resources Committee, Wahkiakum Chamber of Commerce, and WSU Extension not to mention the local education advocates who volunteer time and effort. Our K-8 PTO is stalwart of support and has been for years.